

The  
Littler  
Places  
Art

judges  
creating memories since 1902



Creative gifts for your location

# How it works

## Let's work together to create a range for your location with The Littler Places Art.

We start by sending you a design brief to fill out, where you tell us what landmarks, buildings and icons you would like to see on your artwork.

Next you can pick your products; we have lots to choose from; take a look through this brochure.

Now the fun begins! Our illustrator, Julie, will create a pencil sketch and send it over to you for comments and to make any alterations that you require. Once this is approved she will hand paint your art to add the colours (no alterations can be made to the artwork after painting).

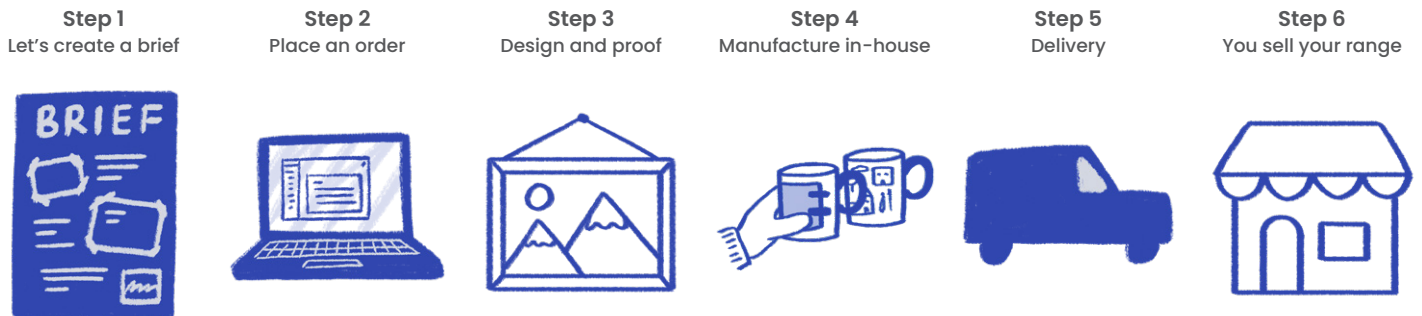
We will then send you visuals of your products.

Then our production team will create your products and send them to your door - this normally takes four weeks from approval of the visuals.

Each order is delivered with a point-of-sale package to help you promote the range in your retail space (see page 12).

*To cover the design and set up charges we ask that you place a minimum initial order of £1500 + VAT.*

*In the unlikely event that you decide to cancel the order after the artwork has been created a cancellation charge of £250 + VAT will be incurred, this will be offset should the order be reinstated.*



### Meet Julie Littler from The Littler Places Art

Julie is an architecture artist with a difference! Having previously worked as an Assistant Cruise Director and spending a lot of time in the Caribbean, Julie fell in love with the colours and the joyful nature of the islands. Combining this with her passion for architecture she matched the two and hand-paints pictures of iconic and favourite landmarks and buildings from around the world in bright and uplifting colours.

Each one starts with a simple pencil sketch and ends in a vibrant and detailed painting. These cheerful images are then made into beautiful quality giftware which sell all around the world. She has many collectors of her work.

'It is well-known that bright colours bring happiness and positivity and when you want to remember a place in a souvenir, you want one which is going to make you smile. Each picture has a rainbow in it somewhere because everyone is cheerful when they see a rainbow!'

# Products



## Art print (framed)

Print size: 11" x 14" | Frame size: 31 x 39cm

ARTPRINT02      MOQ: 10

Supplied full colour print with black frame and small information sticker on the reverse.

## Ceramic mug

Size: 8.3 x 9.5cm, 11oz



MUGCER02      MOQ: 72

Barcode printed on swing tag.

## Enamel mug with silver rim

Size: 8 x 7.8cm



MUG02      MOQ: 48

Barcode printed on swing tag.

## Our mugs

Both our premium coated mugs are hand decorated by us in the UK. They are dishwasher safe, and the ceramic mug can be placed in the microwave.

# Products

## Art print (unframed)

Size: 11" x 14"

ARTPRINT01

MOQ: 25



Supplied full colour print and premium grade white backing card with small information sticker. Packed in cello bag.

## Greeting card

Size: 15.5 x 10.8cm



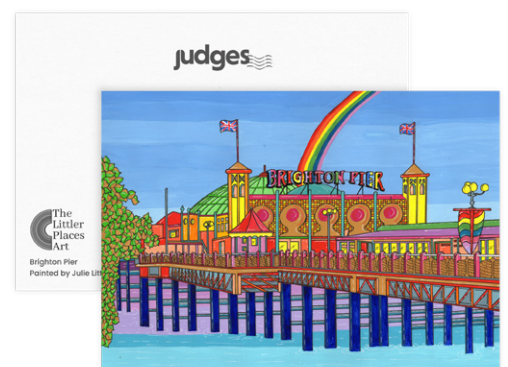
GRE015B

MOQ: 100

Supplied full colour front, blank inside. Barcode printed on reverse. Supplied with white envelope and plastic free sticker packaging.

## Postcard

Size: 14.8 x 10.5cm



PC01

MOQ: 100

Supplied full colour front, standard postcard reverse with barcode.

# Products

## Tote bag

Size: W37 x H42 x D11cm

Gusseted on  
three sides



BAG02

MOQ: 50

10oz natural cotton, 100% cotton.  
Supplied full colour front, blank on reverse.  
Barcode printed on swing tag.

## Our fabric printing

Our fabric products form a high quality backdrop for your design. They are made from natural 100% heavyweight cotton which is pre-washed to achieve superior print quality. They are manufactured in a Fair-Trade certified factory in India and printed by us in the UK.

# Products

## Tea towel (placement print)

Size: 45 x 65cm / 100% 8oz natural cotton



TEA02

MOQ: 50

Supplied full colour front, blank on reverse.  
Folded and supplied with belly band  
packaging with barcode on reverse.

## Tea towel (full print)

Size: 46 x 71cm



ZTEA001W

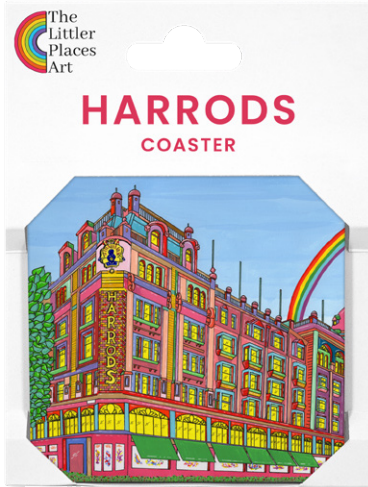
MOQ: 144

Printed full colour on bleached white 8oz 100%  
cotton tea towels with a printed card belly band.

# Products

## Coaster

Size: 9.5 x 9.5cm



COA02MT

MOQ: 108

Supplied full colour front, cork on reverse. Presented in card wrap with barcode on reverse.

## Pencil tube

Size: 19.5 x 3.5cm diameter



PENSET01

MOQ: 72

Supplied full colour, with barcode. Contains 12 colouring pencils in natural wood.

## Photostone keyring

Size: 2.8 x 4cm



KEY04

MOQ: 100

Supplied full colour front, blank on reverse. Barcode printed on reverse of hang tag.

## Set of 4 coasters

Size: 9.5 x 9.5cm

COA05MT

MOQ: 54

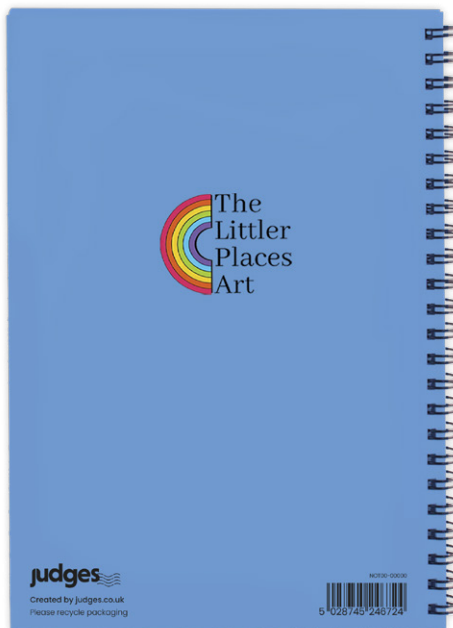
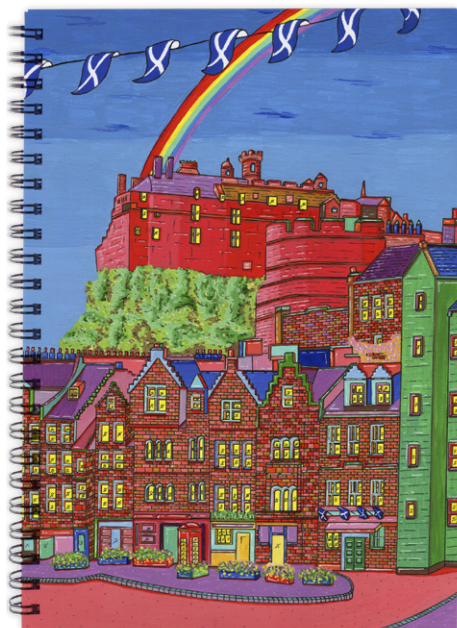
Supplied full colour front, cork on reverse. Packed in card display box with barcode on reverse.



# Products

## A5 hardback notebook

Size: 14.8 x 10.5cm



NOT04

MOQ: 50

Supplied full colour front and back.  
70 pages of blank paper. Supplied loose,  
barcode printed on reverse.

## Three A5 stapled notebooks

Size: 14.8 x 10.5cm



Packed in a  
belly band

NOT11

MOQ: 100

Supplied full colour front.  
36 pages, one lined, one plain and one with graph paper.  
Packed in a belly band with barcode on reverse.





## About Judges

We have been printing for 120 years from our historic base in Hastings. We now have Heidelberg lithographic equipment together with state-of-the-art digital printers and all our design and finishing takes place under the same roof.



# Products

## Card bookmark

Size: 18 x 5cm



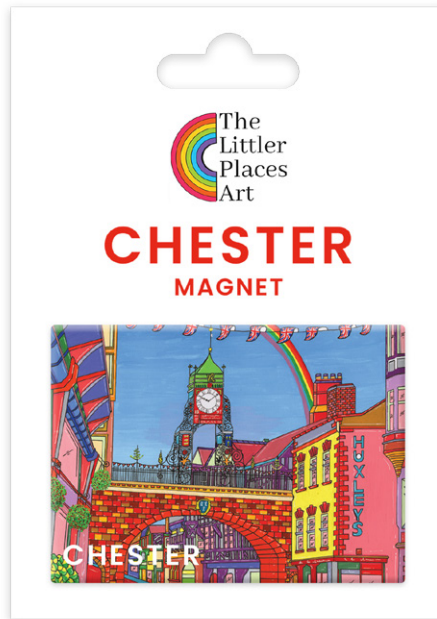
BOO02

MOQ: 100

Supplied full colour front on 415 micron card, barcode printed on reverse.

## Large tin plate magnet

Size: 6.5 x 9cm



MAGTIN05MT

MOQ: 100

Supplied full colour front with matt finish, blank on reverse. Barcode printed on reverse of packaging.

## Magnetic memo pad

Size: 21 x 10cm



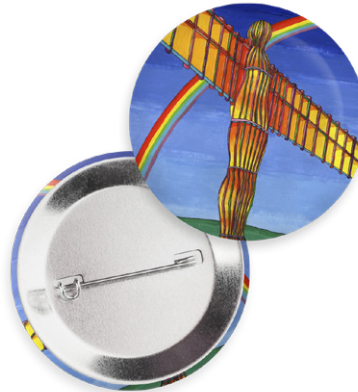
NOT07

MOQ: 100

Supplied full colour front, 40 pages. Magnets on reverse of backing card.

## Button badge

Size: 3.8cm



BAD02

MOQ: 100

Supplied full colour front with matt finish. Metal pin back.

# Products

## White t-shirt

Size: XS, S, M, L, XL, XXL

TSH02

MOQ: 50, at least 10 of each size

Supplied full colour front, blank on reverse.  
Packed with swing ticket tied with twine.



## Our T-shirts

Our shirts are printed by us on 100% semi-combed ring spun white cotton. They have a ribbed collar, taped neck, twin needle stitching and a tubular body.

# Point of sale

We will also send you a package with free point of sale items to help you display and promote your range.

In your exclusive pack you will get:

- Framed print of your design
- A4 show card
- Thank you card

“Thank you  
for your  
order”



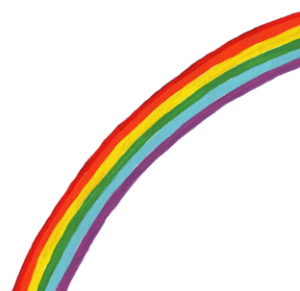
# Our process



Everything you see in this brochure is manufactured in our iconic factory situated just off the seafront in (usually) sunny Hastings.

We value our team's ability to work together, from Julie creating the original artwork, to Tash assembling your products and despatching them out the door. We like to feel that we can iron out any queries quickly and we get the best possible results from our creativity and manufacturing skills.

Please call by if ever you are passing, we might even treat you to a bag of chips on the beach!



# Sustainability



Our printing inks are made from vegetable oils



The paper for our envelopes and the board we print on comes from well managed, sustainable and accredited sources



All our waste printing board and cardboard are sent for recycling. Our general waste is zero landfill



Our whole factory and office suites run on low energy lights



Our heating system has been upgraded to high efficiency boilers



As all of our design and production happens under one roof there is no need for unnecessary transportation of stock

# About us

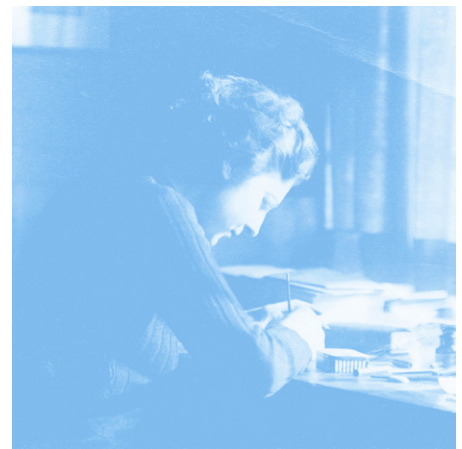
## Judges

Designers and manufacturers of exclusive gift ware.

Based on the photographic excellence of Fred Judge FRPS, Judges was founded in Hastings in 1902 and quickly established itself as one of the country's leading publishers of postcards, opening branches throughout the UK.

During his lifetime he won over 100 trophies, exhibited in America, Australia, Japan and New Zealand. He was specially honoured with one man shows in London, New York and Washington and had 83 acceptances in the annual exhibitions of the Royal Photographic Society

In 1927 Fred relocated the business from the town centre to its current iconic premises, over the decades the building was expanded, equipment modernised and today the company upholds Fred's ethos of creativity and quality to cater for modern demands.



## Contact

We are always happy to discuss any aspect of the design and production process.

Our office is open Monday- Friday 8.15-5.0pm and our sales@ emails are monitored outside these hours.

 [judges.co.uk](http://judges.co.uk)

 [sales@judges.co.uk](mailto:sales@judges.co.uk)

 01424 420919

 [facebook.com/judgesofhastings](https://facebook.com/judgesofhastings)

 [judgesofhastings](https://judgesofhastings)

